

# Generative AI in Education

## Understanding copyright implications

### What is AI?

Artificial intelligence refers to programs or machines that simulate tasks that typically require human intelligence.

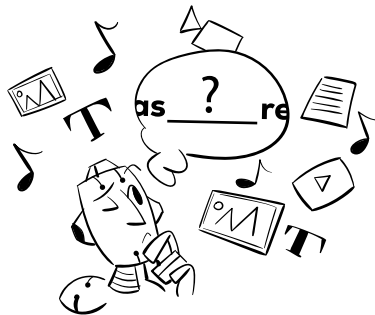
### What is it?

AI-based applications have long been integrated into our daily lives. We all use navigators, search engines, spell checkers and various types of AI-powered tools every day without even realizing it.

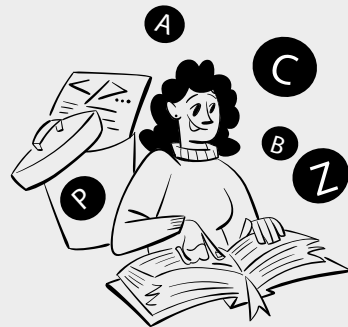


GenAI is a new, powerful category of AI, which includes large language models (LLM) and others that generate text, code, images, videos or music.

## Generative AI (GenAI) Facts

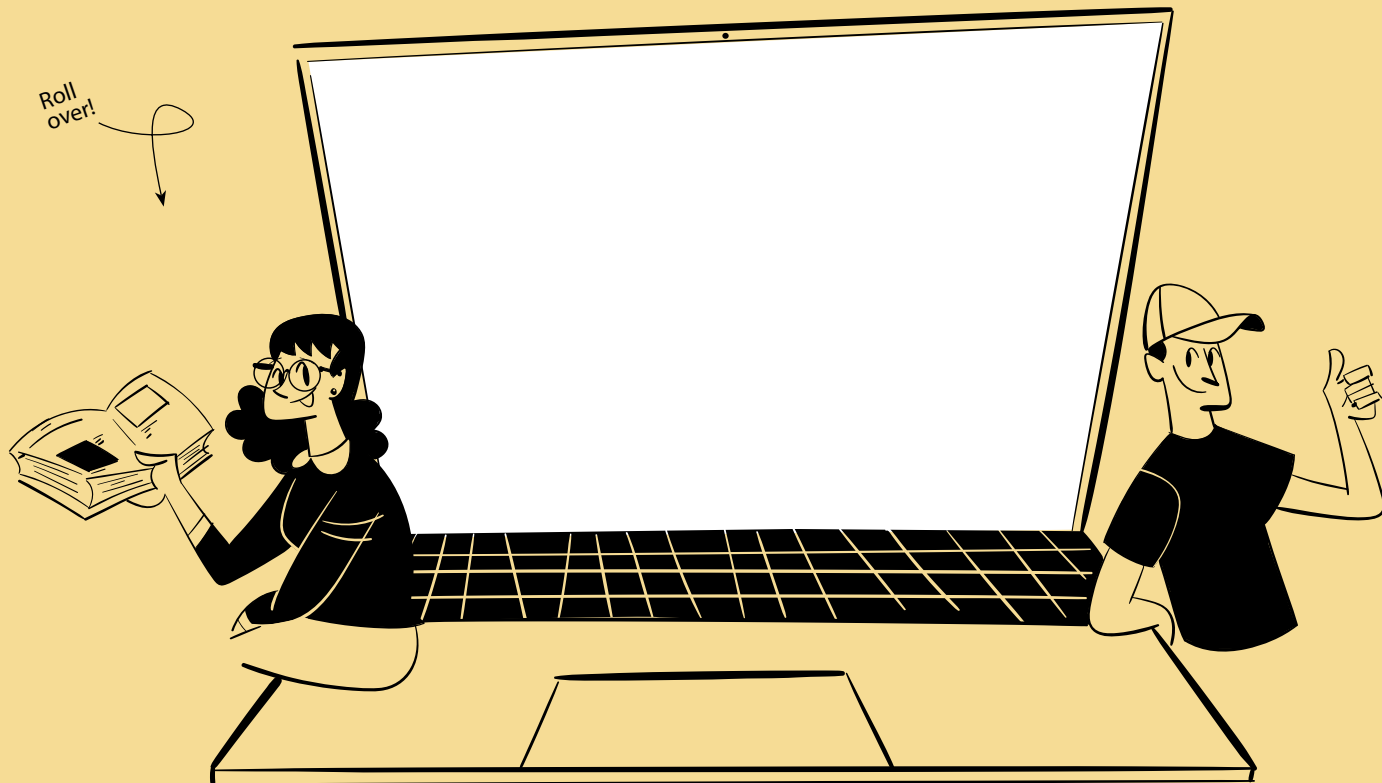


LLMs are trained on a vast amount of digital material, mainly from the Internet, to learn to predict the next word in a sentence and to produce coherent and persuasive human-like output in response to a prompt (language request).




Anyone can use GenAI services simply by using everyday prompts, and no programming skills are needed.

# Responsible use of GenAI in education



# Tips for teachers on responsible use of GenAI

Turn me  
around!



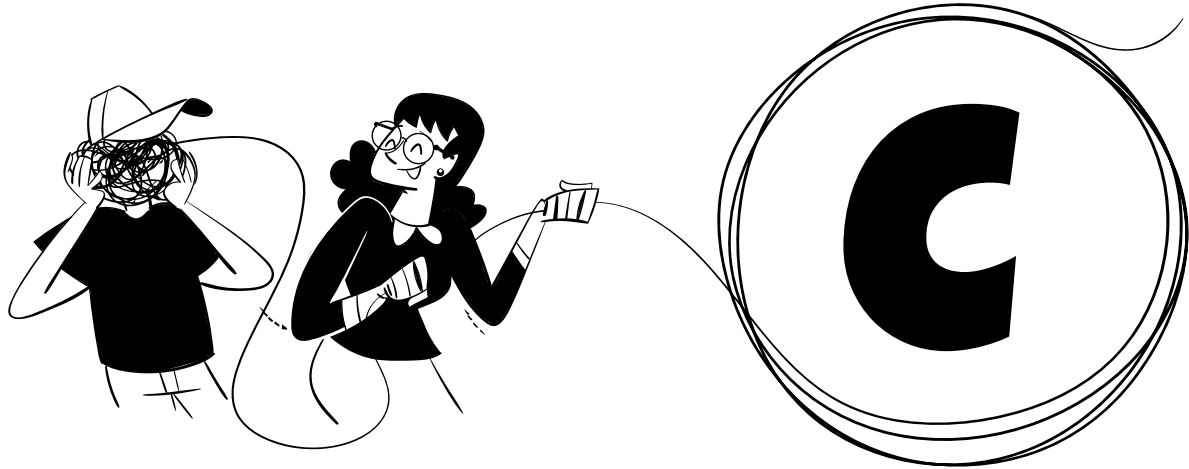
## Watch out!

The use of AI tools may also raise ethical and intellectual property (IP) concerns. In order to interact confidently, critically and safely with new and emerging technologies, teachers and students should have a basic knowledge and common understanding on how to use GenAI in education without forgetting about copyright.

# What teachers and students should know about GenAI and copyright



# How can teachers help students avoid copyright infringement while using Gen AI?



Click me! 