

Statistical travel pack by country/territory

01/1996 to 04/2025 Evolution

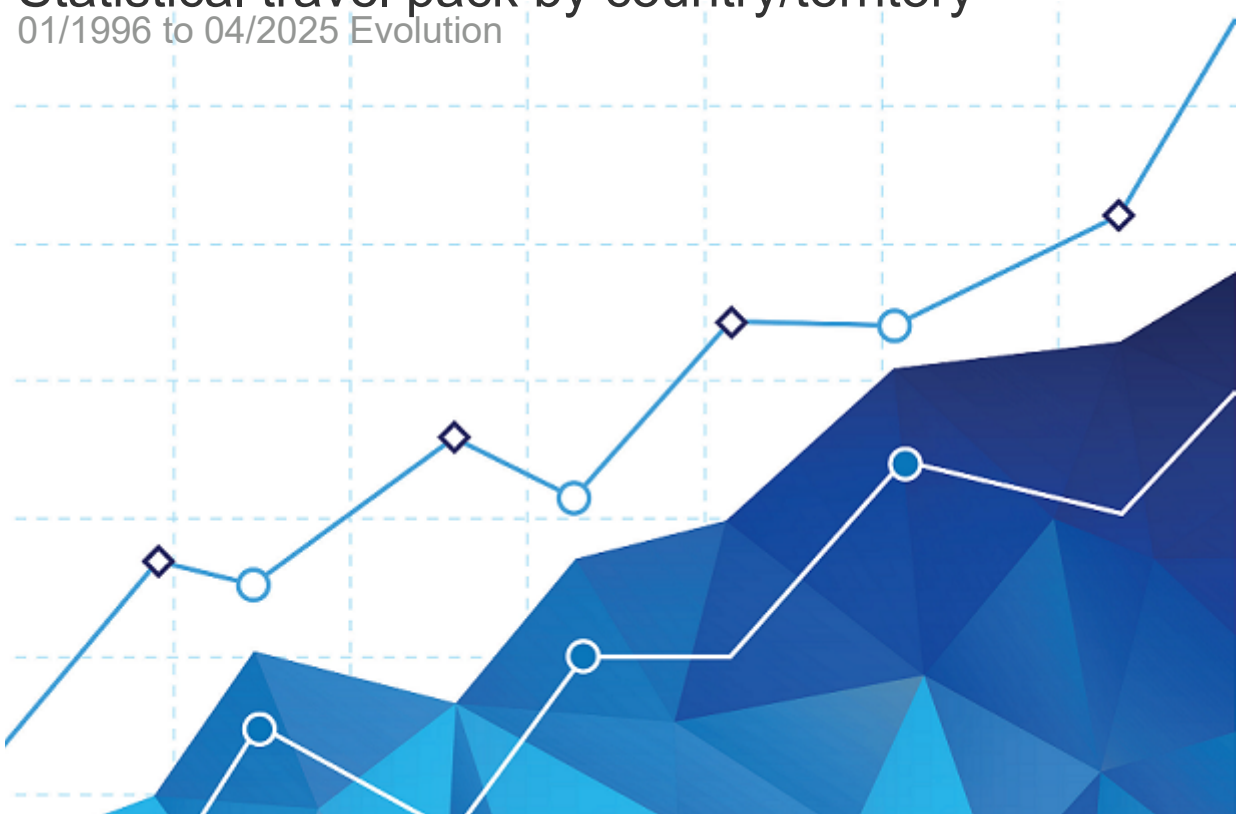




Table of contents

1	EUTMs RCDs & IAs
1.1	EUTMs, RCDs & IAs by Year
1.2	EUTMs, RCDs & IAs by Month
1.3	EUTMs, RCDs & IAs by Classes per Year
1.4	EUTMs & IAs by Number of Classes
1.5	EUTMs, RCDs & IAs by 1st and 2nd language
1.6	EUTMs & IAs by Type of Trade Mark
1.7	EUTMs, RCDs & IAs by Origin
2	Rankings
2.1	Top 25 EUTMs, RCDs, IAs by Nationality of Representative
2.2	Top 25 EUTMs, RCDs, IAs by Nationality of Owner
2.3	Top 25 EUTMs, RCDs, IAs by Owners
2.4	Top 25 EUTMs, RCDs, IAs by Representatives from Owners
2.5	Top 25 EUTMs, RCDs, IAs by Country Representatives



1. EUTMs RCDs & IAs

1.1. EUTMs, RCDs & IAs by Year

DK - DENMARK

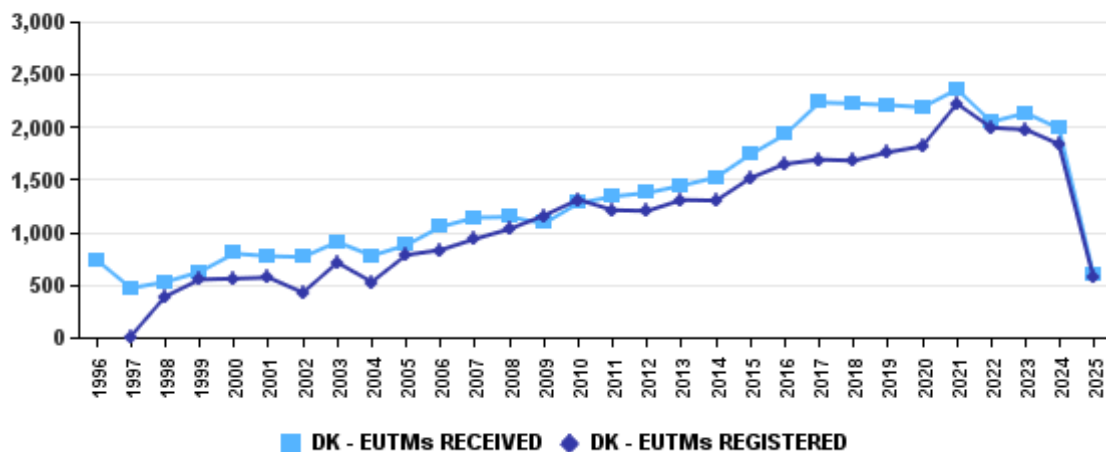
EUTMs Received by Year

	DK
1996	695
1997	459
1998	520
1999	616
2000	790
2001	752
2002	708
2003	870
2004	757
2005	865
2006	1,043
2007	1,126
2008	1,137
2009	1,076
2010	1,270
2011	1,335
2012	1,369
2013	1,438
2014	1,516
2015	1,735
2016	1,923
2017	2,228
2018	2,219
2019	2,205
2020	2,183
2021	2,352
2022	2,045
2023	2,128
2024	1,977
2025	586
Σ	39,923

EUTMs Registered by Year

	DK
1997	3
1998	383
1999	545
2000	554
2001	564
2002	421
2003	706
2004	522
2005	778
2006	826
2007	931
2008	1,025
2009	1,153
2010	1,305
2011	1,205
2012	1,197
2013	1,302
2014	1,296
2015	1,510
2016	1,644
2017	1,686
2018	1,675
2019	1,756
2020	1,813
2021	2,217
2022	1,989
2023	1,971
2024	1,827
2025	565
Σ	33,369

EUTMs Received & Registered by Year





1. EUTMs RCDs & IAs

1.1. EUTMs, RCDs & IAs by Year

DK - DENMARK

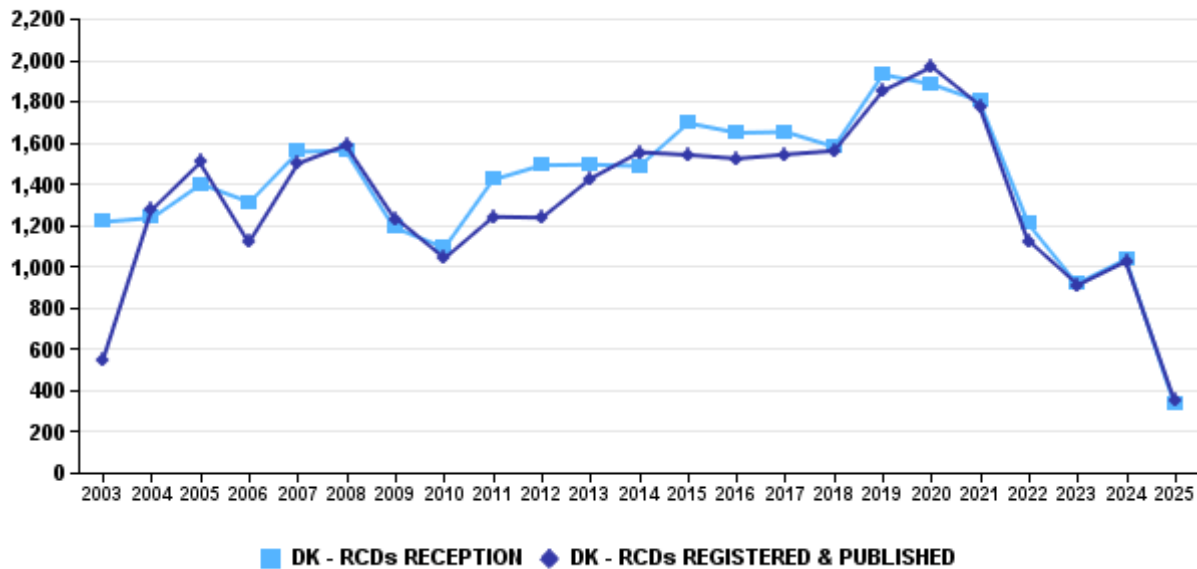
RCDs Received by Year

	DK
2003	1,213
2004	1,233
2005	1,396
2006	1,309
2007	1,553
2008	1,560
2009	1,183
2010	1,087
2011	1,418
2012	1,488
2013	1,491
2014	1,484
2015	1,692
2016	1,645
2017	1,649
2018	1,577
2019	1,927
2020	1,880
2021	1,798
2022	1,208
2023	917
2024	1,034
2025	333
Σ	32,075

RCDs Published by Year

	DK
2003	544
2004	1,274
2005	1,504
2006	1,117
2007	1,497
2008	1,587
2009	1,231
2010	1,037
2011	1,238
2012	1,234
2013	1,424
2014	1,551
2015	1,538
2016	1,520
2017	1,540
2018	1,558
2019	1,849
2020	1,965
2021	1,775
2022	1,119
2023	908
2024	1,024
2025	349
Σ	30,383

RCDs Received & Published by Year





1. EUTMs RCDs & IAs

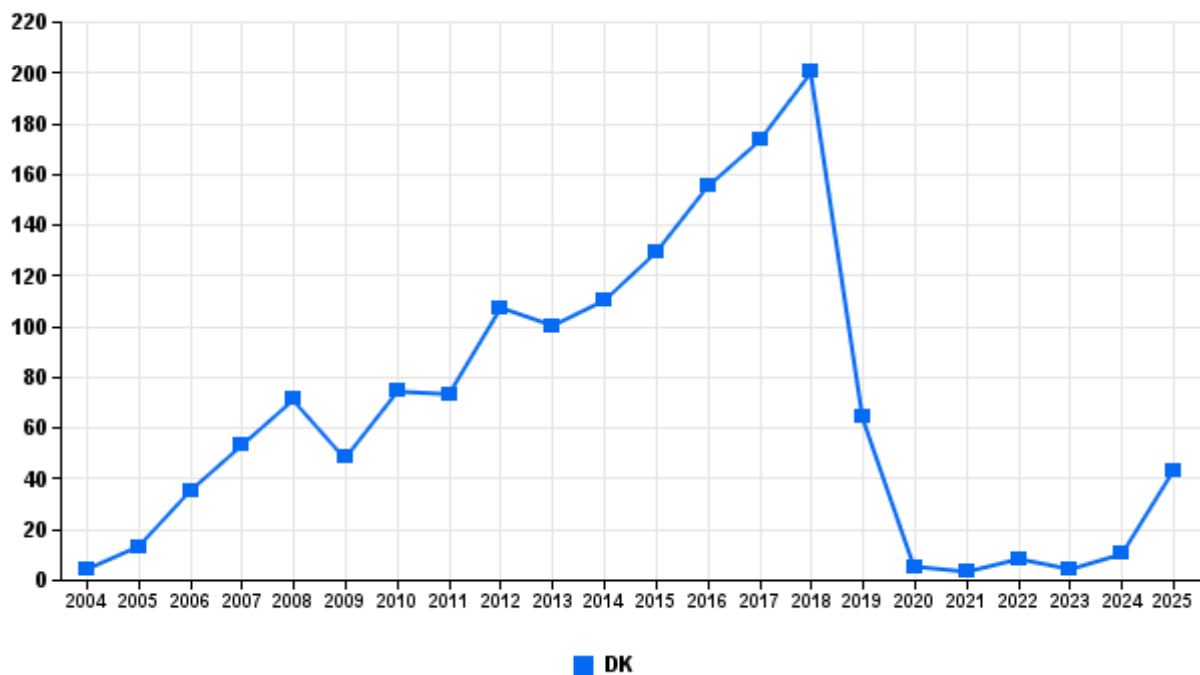
1.1. EUTMs, RCDs & IAs by Year

DK - DENMARK

IAs Received by Year

	DK
2004	4
2005	13
2006	35
2007	53
2008	71
2009	48
2010	74
2011	73
2012	107
2013	100
2014	110
2015	129
2016	155
2017	173
2018	200
2019	64
2020	5
2021	3
2022	8
2023	4
2024	10
2025	43
Σ	1,482

IAs Received Year





1. EUTMs RCDs & IAs

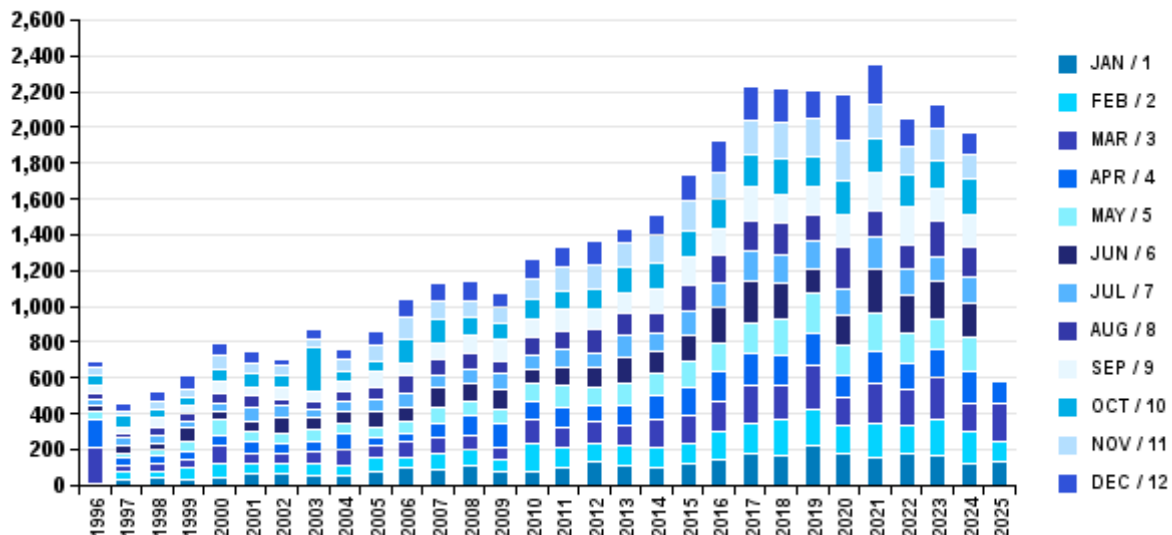
1.2. EUTMs, RCDs & IAs by Month

DK - DENMARK

EUTMs Received by Year - Months

Year	JAN	FEB	MAR	APR	MAY	JUN	JUL	AUG	SEP	OCT	NOV	DEC	Σ
1996	3	7	196	160	50	30	32	38	40	57	44	38	695
1997	36	38	37	39	31	45	41	23	38	60	30	41	459
1998	41	41	45	34	40	32	50	40	56	50	38	53	520
1999	37	63	48	43	50	85	36	42	44	38	55	75	616
2000	39	87	98	60	79	47	45	60	66	67	75	67	790
2001	64	58	61	57	61	59	77	70	46	72	62	65	752
2002	70	56	50	54	61	88	63	40	64	69	53	40	708
2003	59	63	63	60	67	64	50	45	59	238	46	56	870
2004	56	58	83	89	57	74	51	57	55	54	74	49	757
2005	75	76	69	52	54	89	60	76	84	56	88	86	865
2006	97	55	89	50	71	73	81	102	67	128	124	106	1,043
2007	91	82	98	71	92	114	68	93	87	132	103	95	1,126
2008	106	99	77	104	83	100	82	84	107	98	95	102	1,137
2009	71	73	69	135	78	111	91	68	122	83	97	78	1,076
2010	71	161	135	98	107	77	83	92	105	111	116	114	1,270
2011	98	116	104	121	116	109	97	96	125	109	128	116	1,335
2012	131	107	121	85	101	112	83	137	105	113	141	133	1,369
2013	114	104	112	115	127	144	120	121	119	148	133	81	1,438
2014	101	113	149	139	120	123	102	119	136	146	152	116	1,516
2015	125	109	162	155	144	147	134	140	159	146	165	149	1,735
2016	145	155	165	173	152	204	138	159	143	170	147	172	1,923
2017	183	167	214	175	173	227	169	170	193	176	196	185	2,228
2018	170	196	193	168	204	200	159	177	162	194	201	195	2,219
2019	220	202	247	186	215	142	159	138	165	167	211	153	2,205
2020	182	156	156	118	175	167	147	234	178	185	224	261	2,183
2021	153	197	222	175	214	253	176	148	207	189	198	220	2,352
2022	172	160	201	153	162	213	144	141	210	179	160	150	2,045
2023	169	200	232	158	168	214	138	197	180	163	175	134	2,128
2024	125	181	157	178	186	189	149	166	180	199	137	130	1,977
2025	137	107	212	130									586
Σ	3,141	3,287	3,865	3,335	3,238	3,532	2,825	3,073	3,302	3,597	3,468	3,260	39,923

Number of EUTMs Received by Year





1. EUTMs RCDs & IAs

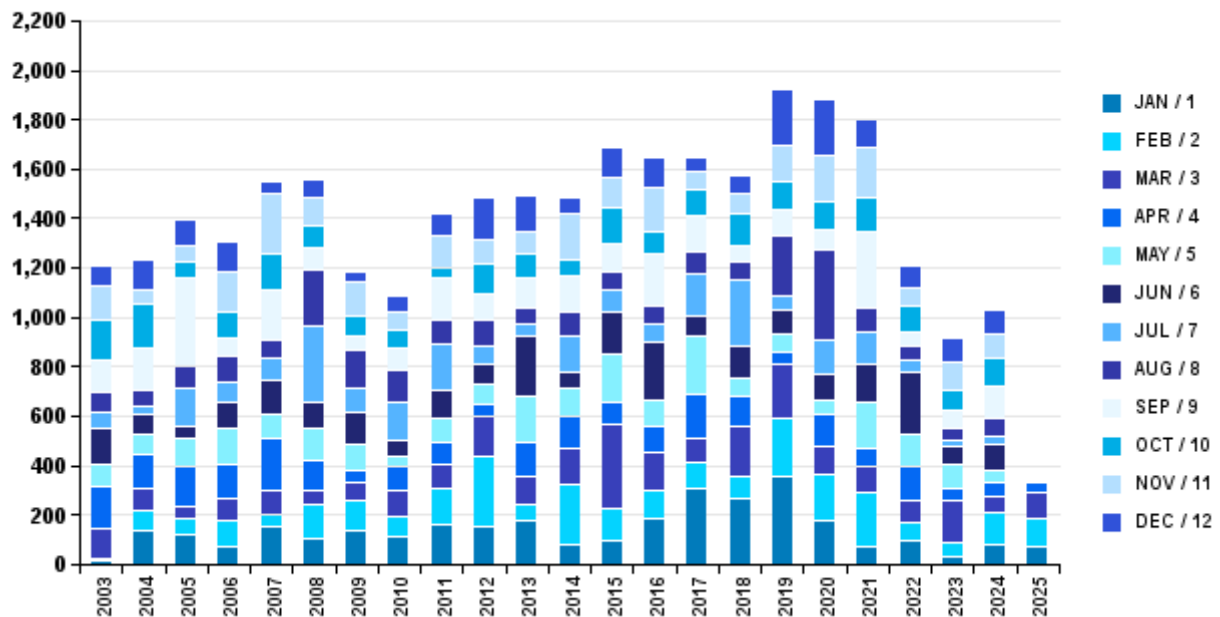
1.2. EUTMs, RCDs & IAs by Month

DK - DENMARK

RCDs Received by Year - Months

Year	JAN	FEB	MAR	APR	MAY	JUN	JUL	AUG	SEP	OCT	NOV	DEC	Σ
2003	14	9	120	169	95	147	65	77	130	161	138	88	1,213
2004	139	82	86	135	82	87	31	64	171	177	57	122	1,233
2005	124	61	53	156	115	54	147	96	354	66	67	103	1,396
2006	71	107	87	139	147	105	82	108	73	105	161	124	1,309
2007	152	51	93	216	93	144	87	71	207	147	242	50	1,553
2008	108	134	57	122	132	106	304	229	88	90	119	71	1,560
2009	140	116	72	53	101	135	97	152	61	76	141	39	1,183
2010	113	79	109	94	44	65	154	128	93	69	72	67	1,087
2011	159	147	98	91	94	116	188	97	167	43	130	88	1,418
2012	151	290	162	46	82	83	72	106	106	118	95	177	1,488
2013	181	60	114	140	185	242	53	66	122	96	87	145	1,491
2014	81	244	141	136	111	67	148	93	147	62	189	65	1,484
2015	94	135	342	89	194	169	86	78	111	149	120	125	1,692
2016	186	116	149	105	111	234	72	76	209	89	180	118	1,645
2017	310	99	98	183	238	77	168	90	148	104	79	55	1,649
2018	267	90	204	116	75	133	271	69	66	129	79	78	1,577
2019	360	231	222	46	73	99	55	242	112	111	149	227	1,927
2020	176	187	117	128	57	108	132	373	77	111	191	223	1,880
2021	75	215	106	75	182	158	129	99	307	137	204	111	1,798
2022	99	72	88	141	123	258	49	53	59	101	75	90	1,208
2023	29	57	171	53	98	67	25	55	67	87	112	96	917
2024	76	131	69	58	46	107	34	71	130	113	96	103	1,034
2025	70	112	111	40									333
Σ	3,175	2,825	2,869	2,531	2,478	2,761	2,449	2,493	3,005	2,341	2,783	2,365	32,075

Number of RCDs Received by Year





1. EUTMs RCDs & IAs

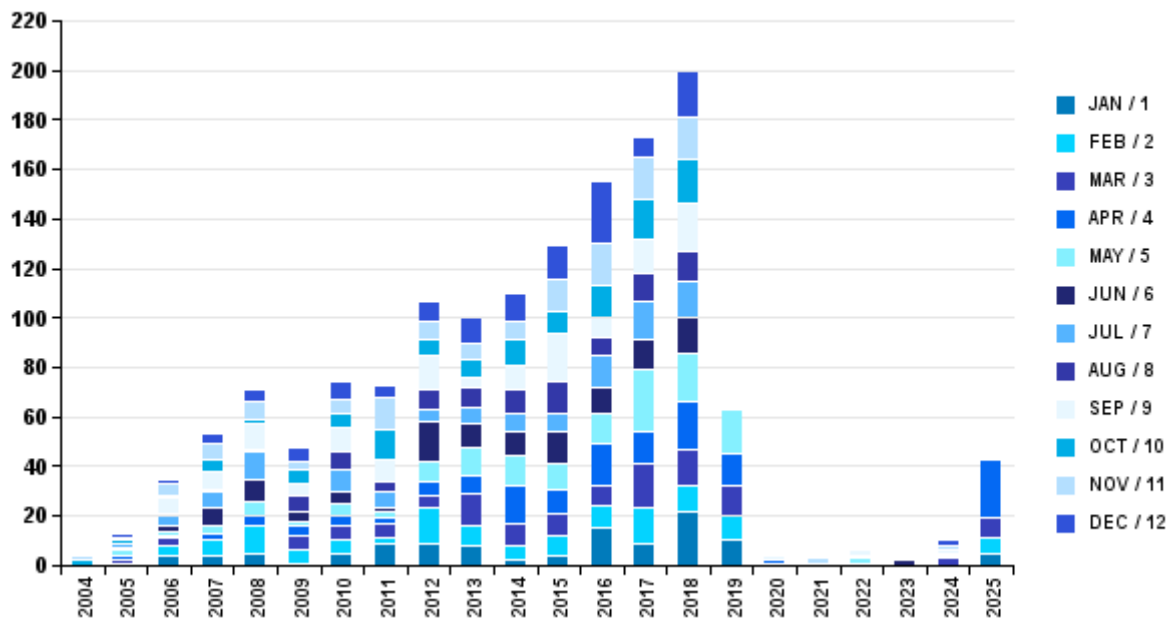
1.2. EUTMs, RCDs & IAs by Month

DK - DENMARK

IAs Received by Year - Months

Year	JAN	FEB	MAR	APR	MAY	JUN	JUL	AUG	SEP	OCT	NOV	DEC	Σ
2004										2	2		4
2005	1		1	2	2	1	2			1	1	2	13
2006	4	4	3	1	2	2	4	1	6	1	5	2	35
2007	4	6		3	3	7	7	1	7	5	6	4	53
2008	5	11		4	6	9	11	1	10	2	7	5	71
2009	1	5	6	4	2	4		6	5	6	3	6	48
2010	5	5	6	4	5	5	9	7	10	5	6	7	74
2011	9	2	6	2	3	1	7	4	9	12	13	5	73
2012	9	14	5	6	8	16	5	8	14	6	8	8	107
2013	8	8	13	7	12	9	7	8	4	7	7	10	100
2014	2	6	9	15	12	10	7	10	10	10	8	11	110
2015	4	8	9	10	10	13	7	13	20	9	13	13	129
2016	15	9	8	17	12	11	13	7	8	13	17	25	155
2017	9	14	18	13	25	12	16	11	14	16	17	8	173
2018	22	10	15	19	20	14	15	12	19	18	17	19	200
2019	10	10	12	13	18	1							64
2020	1			1					2	1			5
2021		1									2		3
2022				1	2			1	2	1	1		8
2023						2					1	1	4
2024			3		1			1	1		2	2	10
2025	5	6	8	24									43
Σ	114	119	122	146	143	117	110	91	141	115	136	128	1,482

Number of IAs Received by Year





1. EUTMs RCDs & IAs

1.3. EUTMs, RCDs & IAs by Class per Year

DK - DENMARK

EUTMs Received by Class – Years

Class	1996-2015	2016	2017	2018	2019	2020	2021	2022	2023	2024	2025	Σ
0	151											151
1	1,189	67	70	83	93	93	83	71	114	98	31	1,992
2	303	21	23	24	25	18	34	25	15	36	12	536
3	1,120	84	103	106	154	120	167	151	132	125	43	2,305
4	278	23	38	41	29	35	29	26	37	41	14	591
5	2,429	128	183	208	240	261	281	224	287	209	51	4,501
6	1,053	68	69	70	91	79	86	75	62	77	22	1,752
7	1,500	129	131	118	138	131	160	124	144	113	41	2,729
8	492	38	44	32	52	50	53	45	41	55	19	921
9	4,926	631	788	809	631	561	588	631	675	557	191	10,988
10	1,326	90	128	121	136	152	144	125	130	106	23	2,481
11	1,557	156	146	133	156	180	212	146	157	147	50	3,040
12	669	72	63	54	60	97	76	54	87	44	23	1,299
13	67	1	6	6		6	9	1	3	4		103
14	908	72	61	59	79	76	66	51	55	53	27	1,507
15	52	1	2	1	9	5	10	4	4	3	5	96
16	2,028	123	107	114	116	100	108	95	76	90	41	2,998
17	547	25	24	37	63	48	44	34	53	45	17	937
18	1,500	133	125	129	154	134	157	130	122	100	37	2,721
19	916	63	50	85	70	66	79	75	59	80	15	1,558
20	1,541	142	160	152	151	162	231	192	151	161	47	3,090
21	1,065	119	102	110	121	111	144	136	128	101	35	2,172
22	239	11	16	24	29	19	17	23	21	24	7	430
23	53		3	7	10	7	2	1	6	7	3	99
24	858	76	72	80	99	97	106	92	75	57	15	1,627
25	2,768	210	217	259	282	258	280	265	232	213	77	5,061
26	148	9	16	8	17	14	14	23	17	13	8	287
27	230	21	30	21	27	41	33	27	23	24	9	486
28	1,380	295	439	486	294	102	145	121	121	104	46	3,533
29	1,443	156	121	103	140	108	125	82	108	109	30	2,525
30	1,541	159	155	135	164	102	118	103	108	110	33	2,728
31	931	72	94	56	69	69	67	58	52	61	20	1,549
32	817	94	92	102	109	86	109	64	66	102	29	1,670
33	393	73	64	78	58	58	66	56	51	76	11	984
34	283	7	28	40	37	21	48	11	11	16	4	506
35	4,070	550	474	497	597	599	654	638	591	596	164	9,430
36	999	87	91	67	97	100	104	114	115	126	26	1,926
37	1,615	143	120	103	115	154	149	126	141	172	51	2,889
38	1,015	63	81	61	64	81	66	66	69	58	12	1,636
39	908	90	70	60	89	98	91	75	92	103	33	1,709
40	660	64	41	47	84	75	75	68	82	89	32	1,317
41	2,473	376	520	535	353	246	231	221	234	212	74	5,475
42	3,823	308	401	326	380	430	466	505	580	498	161	7,878
43	622	104	83	70	74	76	85	70	73	58	21	1,336
44	743	101	111	98	107	138	133	110	105	79	30	1,755
45	419	49	60	55	52	69	63	84	64	41	11	967
Σ	54,048	5,304	5,822	5,810	5,915	5,533	6,008	5,418	5,569	5,193	1,651	106,271



1. EUTMs RCDs & IAs

1.3. EUTMs, RCDs & IAs by Class per Year

DK - DENMARK

RCDs Received by Class – Years

Class	2003-2015	2016	2017	2018	2019	2020	2021	2022	2023	2024	2025	Σ
1	61	11		3				2	1			78
2	2,366	86	24	85	44	50	97	84	35	45	2	2,918
3	212	8	18	16	17	7	5	14	10	8	10	325
4	96	2	1	5	4	3	12	3	7	24	8	165
5	140	6	5	12	16	5	2	7	7	15	2	217
6	3,321	320	505	367	406	375	313	285	253	280	98	6,523
7	1,226	111	42	62	52	43	51	58	31	42	23	1,741
8	926	100	57	60	65	83	81	56	75	36	18	1,557
9	1,259	144	68	79	228	130	161	75	27	38	42	2,251
10	270	24	30	65	57	15	20	24	19	40	3	567
11	1,555	194	271	309	280	383	248	101	57	152	14	3,564
12	335	28	17	19	17	15	17	27	12	25	3	515
13	225	7	39	16	85	80	15	40	16	17	7	547
14	771	114	110	81	84	84	134	58	81	39	13	1,569
15	638	84	35	123	97	33	25	44	37	33	11	1,160
16	352	43			1	2		1	18		15	432
17	8	2				1		1				12
18	20	6	1	3		3	3		9	8		53
19	348	20	39	32	12	13	6	18	19	17		524
20	242	17	6	1	1	3	41	1	2	3		317
21	782	70	166	56	45	80	78	72	58	69	14	1,490
22	41	3	5	6	1	12	8	1	1		1	79
23	928	46	27	51	39	39	39	59	25	29	2	1,284
24	436	64	36	30	19	45	66	69	50	60	9	884
25	718	63	44	27	80	94	56	52	31	28	19	1,212
26	869	88	132	89	170	172	217	83	117	124	15	2,076
27	59	7	1			1					1	69
28	49	8	12		6	25	23		3	12		138
29	14	3		3		5	2	4	1		3	35
30	152	16	1	14	4	6	8	5	4	11		221
31	53	1	9	2		20	1	9	8	5		108
32	382	47	32	72	177	87	172	46	24	27	37	1,103
99	173											173
Σ	19,027	1,743	1,733	1,688	2,007	1,914	1,901	1,299	1,038	1,187	370	33,907



1. EUTMs RCDs & IAs

1.3. EUTMs, RCDs & IAs by Class per Year

DK - DENMARK

International Applications Received by Class – Years

Class	2004-2015	2016	2017	2018	2019	2020	2021	2022	2023	2024	2025	Σ
01	32	10	4	9	7					1		63
02	10	2	2	6	1				1			22
03	58	10	6	5	5	1		4	1	1	3	94
04	14	2	9		1						1	27
05	70	8	15	9	6	1	2	3		2	4	120
06	45	10	8	11	1						2	77
07	78	18	17	20	6		1				4	144
08	21	5		2							1	29
09	203	39	56	65	14	1	3		1	5	13	400
10	85	18	21	19	3		3	1		1	3	154
11	76	18	18	13	1		2			1	7	136
12	44	15	5	8	2			1				75
13	1			1								2
14	60	5	2	6	2				1		3	79
16	40	8	15	13					1		2	79
17	24	3	6	6	6			1			3	49
18	109	17	15	13	4				1		2	161
19	20	4	6	7	2						4	43
20	79	28	26	21	2				1		6	163
21	53	12	11	13	2				1		1	93
22	15		1	2	2							20
23	4				1							5
24	59	14	6	18	3						4	104
25	156	19	24	28	13				1	1	9	251
26	13								1			14
27	12	7	6	2							1	28
28	57	14	13	18	4				2		3	111
29	32	11	2	9	1	1					5	61
30	33	9	6	10		1					4	63
31	32	6	8	4	6	1					2	59
32	23	3	3	11	3				1		6	50
33	9	1	3	9					3		2	27
34	4	2	2	1	1							10
35	185	66	52	69	15	2		4	1	5	8	407
36	24	6	9	3	1					2	1	46
37	75	17	19	12	2		2			1	3	131
38	40	9	5	8				1			2	65
39	24	6	8	5	3					1		47
40	34	4	7	1	1					1	6	54
41	75	9	13	21	3			2	1		3	127
42	140	32	48	42	10			1		6	8	287
43	13		3	3							2	21
44	36	11	6	9	2		2	2			3	71
45	19	6	7	7	1							40
Σ	2,236	484	493	539	137	8	15	20	18	28	131	4,109



1. EUTMs RCDs & IAs

1.4. EUTMs & IAs by Number of Classes

DK - DENMARK

EUTMs Received by Number of Classes - Year

No. of Class	1996-2015	2016	2017	2018	2019	2020	2021	2022	2023	2024	2025	Σ
1	5,985	506	666	630	650	798	810	609	648	625	151	12,078
2	3,425	412	464	488	510	493	562	539	560	515	173	8,141
3	7,014	629	727	715	598	444	462	459	426	420	130	12,024
4	1,692	146	180	169	197	223	267	200	256	201	61	3,592
5	808	84	68	102	111	97	122	97	106	100	28	1,723
6	488	64	46	49	60	44	53	51	63	41	19	978
7	218	35	30	22	24	30	26	35	24	27	10	481
8	175	20	16	19	24	14	14	22	19	15	1	339
9	87	12	8	5	8	12	14	16	9	6	2	179
10	55	1	6	4	11	3	7	5	9	4	4	109
11	35	5	3	12	2	9	6	3	1	1		77
12	17	1	5		2	8	3	2	6	8		52
13	15	7	2	2		1	2	7		1	2	39
14	12		2	1	2	1				4	1	23
15	15		2			3	1			5	1	27
16	9		1	1		2	1			1		15
17	5		1		1	1	1		1			10
18	3	1										4
19	4									2		6
20	1									1		2
21											1	1
22					2							2
23	4				1		1					6
24					2							2
25	4											4
26	4										1	5
28											1	1
31			1									1
35	2											2
Σ	20,077	1,923	2,228	2,219	2,205	2,183	2,352	2,045	2,128	1,977	586	39,923



1. EUTMs RCDs & IAs

1.4. EUTMs & IAs by Number of Classes

DK - DENMARK

International Applications Received by Number of Classes - Year

No. of Class	2004-2015	2016	2017	2018	2019	2020	2021	2022	2023	2024	2025	Σ
1	239	31	46	61	21	3		3	1		9	414
2	130	27	44	51	25	1		2	2	7	13	302
3	293	51	44	48	11	1	1	1		2	4	456
4	70	21	15	15	4						8	133
5	35	8	5	10	2			2			6	68
6	19	7	5	6	1		2					40
7	18	3	7	4							2	34
8	7	6	7	2						1	1	24
9	3											3
10	1	1										2
11				2								2
12	1			1								2
13									1			1
14	1											1
Σ	817	155	173	200	64	5	3	8	4	10	43	1,482



1. EUTMs RCDs & IAs

1.5. EUTMs, RCDs & IAs by 1st and 2nd language

DK - DENMARK

EUTMs Received by First Language and Second Language

2nd	DE		EN		ES		FR		IT		Total 1st	
	EUTMs	%	EUTMs	%	EUTMs	%	EUTMs	%	EUTMs	%	Σ	%
DA	150	0.38%	28,609	71.66%	3	0.01%	5	0.01%	6	0.02%	28,773	72.07%
EN	5,969	14.95%	5	0.01%	1,623	4.07%	1,307	3.27%	307	0.77%	9,211	23.07%
SV			873	2.19%							873	2.19%
DE			446	1.12%	1	0.00%	4	0.01%			451	1.13%
FR	38	0.10%	150	0.38%							188	0.47%
NL			163	0.41%			4	0.01%			167	0.42%
ES			56	0.14%			1	0.00%	1	0.00%	58	0.15%
PL			56	0.14%							56	0.14%
FI			46	0.12%							46	0.12%
IT			35	0.09%							35	0.09%
LT			19	0.05%							19	0.05%
LV			11	0.03%							11	0.03%
EL			7	0.02%							7	0.02%
PT			6	0.02%	1	0.00%					7	0.02%
HU			6	0.02%							6	0.02%
RO			5	0.01%							5	0.01%
ET			4	0.01%							4	0.01%
CS			3	0.01%							3	0.01%
SL			2	0.01%							2	0.01%
BG			1	0.00%							1	0.00%
Total 2nd	6,157	15.42%	30,503	76.40%	1,628	4.08%	1,321	3.31%	314	0.79%	39,923	100%



1. EUTMs RCDs & IAs

1.5. EUTMs, RCDs & IAs by 1st and 2nd language

DK - DENMARK

RCDs Received by First Language and Second Language

2nd	DE		EN		ES		FR		IT		XX		Total 1st	
	RCDs	%	RCDs	%	RCDs	%	RCDs	%	RCDs	%	RCDs	%	Σ	%
DA	94	0.29%	23,749	74.04%	64	0.20%	4	0.01%					23,911	74.55%
EN	5,855	18.25%			97	0.30%	326	1.02%	115	0.36%	2	0.01%	6,395	19.94%
DE			1,178	3.67%									1,178	3.67%
SV			225	0.70%									225	0.70%
FI			101	0.31%									101	0.31%
PL			34	0.11%			64	0.20%					98	0.31%
NL			74	0.23%									74	0.23%
IT			52	0.16%									52	0.16%
PT			14	0.04%									14	0.04%
ES			7	0.02%									7	0.02%
HU			7	0.02%									7	0.02%
FR			6	0.02%									6	0.02%
RO			4	0.01%									4	0.01%
EL			2	0.01%									2	0.01%
LV			1	0.00%									1	0.00%
Total 2nd	5,949	18.55%	25,454	79.36%	161	0.50%	394	1.23%	115	0.36%	2	0.01%	32,075	100%



1. EUTMs RCDs & IAs

1.5. EUTMs, RCDs & IAs by 1st and 2nd language

DK - DENMARK

International Applications Received by First Language and Second Language

1st	EN		Total 2nd	
2nd	IAs	%	Σ	%
DA	278	18.76%	278	18.76%
DE	15	1.01%	15	1.01%
EN	1,177	79.42%	1,177	79.42%
FI	1	0.07%	1	0.07%
IT	1	0.07%	1	0.07%
NL	1	0.07%	1	0.07%
PL	3	0.20%	3	0.20%
SV	6	0.40%	6	0.40%
Total 1st	1,482	100.00%	1,482	100.00%



1. EUTMs RCDs & IAs

1.6. EUTMs & IAs by Type of Trade Mark

DK - DENMARK

EUTMs Received by Type of Trade mark

Nature of EUTM	Number of EUTMs Received	%
Word Mark	27,200	68.13 %
Figurative	12,488	31.28 %
3D	183	0.46 %
Motion	13	0.03 %
Other	12	0.03 %
Sound	10	0.03 %
Pattern	9	0.02 %
Color	4	0.01 %
Position	3	0.01 %
Unknown	1	0.00 %
Σ	39,923	100.00 %



1. EUTMs RCDs & IAs

1.6. EUTMs & IAs by Type of Trade Mark

DK - DENMARK

International Applications Received by Type of Trade mark

Type of trade mark	Number of IAs Received	%
Word Mark	1,018	68.69 %
Figurative	454	30.63 %
Unknown	6	0.40 %
3D	2	0.13 %
Color	2	0.13 %
Σ	1,482	100.00 %



1. EUTMs RCDs & IAs

1.7. EUTMs, RCDs & IAs by Origin

DK - DENMARK

EUTMs Received by Origin

EUTMs	E-Filing	Fax	IR	Mail	Σ
1996		127		568	695
1997		248		211	459
1998		324		196	520
1999				616	616
2000		44		746	790
2001		585		167	752
2002	4	568		136	708
2003	107	663		100	870
2004	181	513	1	62	757
2005	307	356	114	88	865
2006	658	124	197	64	1,043
2007	778	88	221	39	1,126
2008	772	45	291	29	1,137
2009	847	29	188	12	1,076
2010	1,044	13	188	25	1,270
2011	1,113	13	186	23	1,335
2012	1,171	16	159	23	1,369
2013	1,171	14	235	18	1,438
2014	1,282	25	208	1	1,516
2015	1,481	3	241	10	1,735
2016	1,734	3	186		1,923
2017	1,987	2	239		2,228
2018	2,021		196	2	2,219
2019	1,973		229	3	2,205
2020	1,949		234		2,183
2021	2,105		247		2,352
2022	1,812		233		2,045
2023	1,913		215		2,128
2024	1,775		202		1,977
2025	537		49		586
Σ	28,722	3,803	4,259	3,139	39,923
%	71.94 %	9.53 %	10.67 %	7.86 %	100.0 %



1. EUTMs RCDs & IAs

1.7. EUTMs, RCDs & IAs by Origin

DK - DENMARK

RCDs Received by Origin

RCDs	E-Filing	Fax	Mail	Σ
2003	33	524	656	1,213
2004	105	669	459	1,233
2005	268	650	478	1,396
2006	503	285	521	1,309
2007	726	201	626	1,553
2008	795	338	427	1,560
2009	858	152	173	1,183
2010	939	62	86	1,087
2011	1,258	73	87	1,418
2012	1,302	58	128	1,488
2013	1,372	18	101	1,491
2014	1,398	43	43	1,484
2015	1,594	49	49	1,692
2016	1,632		13	1,645
2017	1,637		12	1,649
2018	1,569		8	1,577
2019	1,927			1,927
2020	1,878		2	1,880
2021	1,798			1,798
2022	1,208			1,208
2023	917			917
2024	1,034			1,034
2025	333			333
Σ	25,084	3,122	3,869	32,075
%	78.20 %	9.73 %	12.06 %	100.00 %



1. EUTMs RCDs & IAs

1.7. EUTMs, RCDs & IAs by Origin

DK - DENMARK

International Applications Received by Origin

IAs	E-Filing	Fax	Mail	Σ
2004		4		4
2005		12	1	13
2006		26	9	35
2007		47	6	53
2008		62	9	71
2009		40	8	48
2010		60	14	74
2011		64	9	73
2012		99	8	107
2013	1	97	2	100
2014	1	99	10	110
2015		114	15	129
2016		146	9	155
2017	78	88	7	173
2018	187	11	2	200
2019	62	2		64
2020	4		1	5
2021	3			3
2022	8			8
2023	4			4
2024	10			10
2025	43			43
Σ	401	971	110	1,482
%	27.1 %	65.5 %	7.4 %	100.00 %



2. Rankings

2.1. EUTMs, RCDs & IAs by Nationality of Representative

DK - DENMARK

EUTMs Received By Nationality of Representative

Nationality of representative*	Number Of EUTMs Received	%
DK	29,179	73.09 %
XX	6,716	16.82 %
DE	937	2.35 %
SE	870	2.18 %
ES	780	1.95 %
GB	214	0.54 %
NL	204	0.51 %
BE	165	0.41 %
FI	128	0.32 %
IE	115	0.29 %
FR	114	0.29 %
LU	91	0.23 %
PL	79	0.20 %
IT	54	0.14 %
NO	38	0.10 %
US	36	0.09 %
LT	31	0.08 %
LV	29	0.07 %
IS	27	0.07 %
SK	20	0.05 %
CZ	15	0.04 %
RO	12	0.03 %
GR	11	0.03 %
AT	10	0.03 %
HU	7	0.02 %
MT	7	0.02 %
BG	5	0.01 %
CY	5	0.01 %
EE	5	0.01 %
PT	4	0.01 %
CH	3	0.01 %
CN	3	0.01 %
SI	3	0.01 %
IN	2	0.01 %
HR	1	0.00 %
RU	1	0.00 %
TR	1	0.00 %
UA	1	0.00 %
Σ	39,923	100.00 %



2. Rankings

2.1. EUTMs, RCDs & IAs by Nationality of Representative

DK - DENMARK

International Applications Received By Nationality of Representative

Nationality of representative*	Number of IAs Received*	%
DK	1,283	86.57 %
XX	87	5.87 %
DE	45	3.04 %
SE	30	2.02 %
GB	21	1.42 %
NL	5	0.34 %
PL	4	0.27 %
CY	2	0.13 %
BE	1	0.07 %
CZ	1	0.07 %
EE	1	0.07 %
FI	1	0.07 %
IT	1	0.07 %
Σ	1,482	100.00 %
HU	8	0.02 %
FR	5	0.02 %
AT	3	0.01 %
GR	2	0.01 %
LT	2	0.01 %
CZ	1	0.00 %
RO	1	0.00 %
Σ	32,075	100.00 %



2. Rankings

2.2. EUTMs, RCDs & IAs by Nationality of Owner

DK - DENMARK

Top 25 EUTMs with representatives from DK - DENMARK, sorted by owner's nationality

Nationality of Owner	Number of EUTMs Represented	%
DK	29,285	67.90 %
US	6,607	15.32 %
GB	1,590	3.69 %
CH	733	1.70 %
NO	680	1.58 %
CA	584	1.35 %
DE	446	1.03 %
SE	402	0.93 %
NL	354	0.82 %
SG	339	0.79 %
HK	288	0.67 %
MT	269	0.62 %
CN	241	0.56 %
AU	204	0.47 %
JP	158	0.37 %
FR	139	0.32 %
CY	99	0.23 %
IL	94	0.22 %
BE	90	0.21 %
ZA	78	0.18 %
FI	77	0.18 %
IN	77	0.18 %
IT	77	0.18 %
VG	74	0.17 %
KR	73	0.17 %
KY	71	0.16 %
Σ	43,129	14.52 %



2. Rankings

2.2. EUTMs, RCDs & IAs by Nationality of Owner

DK - DENMARK

Top 25 RCDs with representatives from DK - DENMARK, sorted by owner's nationality

Nationality of Owner	Number of RCDs Represented	%
DK	22,235	82.15 %
US	1,564	5.78 %
NO	710	2.62 %
GB	703	2.60 %
CN	399	1.47 %
CH	216	0.80 %
DE	195	0.72 %
CA	192	0.71 %
HK	119	0.44 %
KR	104	0.38 %
AU	96	0.35 %
SE	93	0.34 %
JP	85	0.31 %
NL	56	0.21 %
FR	55	0.20 %
LK	45	0.17 %
VG	42	0.16 %
FI	30	0.11 %
IL	27	0.10 %
SG	22	0.08 %
FO	19	0.07 %
BE	17	0.06 %
PL	17	0.06 %
IS	15	0.06 %
LU	11	0.04 %
Σ	27,067	21.67 %



2. Rankings

2.2. EUTMs, RCDs & IAs by Nationality of Owner

DK - DENMARK

Top 25 IAs with representatives from DK - DENMARK, sorted by owner's nationality

Nationality of Owner	Number of IAs Represented	%
DK	1,285	100.00%
Σ	1,285	28.20 %



2. Rankings

2.3. Owners by Number of EUTMs, RCDs & IAs

DK - DENMARK

Top 25 Owners of the country by Number of EUTMs Received

Owner Name	e-Comm	MyPage	# EUTMs	%	Rk
DRACCO BRANDS HOLDINGS APS	Y	N	1,333	3.32%	1
NOVO NORDISK A/S	N	Y	387	0.96%	2
H. LUNDBECK A/S	Y	Y	347	0.87%	3
ARLA FOODS AMBA	N	N	194	0.48%	4
DANFOSS A/S	N	Y	170	0.42%	5
NOVOZYMES A/S	Y	Y	167	0.42%	6
SALLING GROUP A/S	N	N	162	0.40%	7
OTICON A/S	N	N	159	0.40%	8
LEGO HOLDING A/S	Y	N	155	0.39%	9
AKTIESELSKABET AF 21. NOVEMBER 2001	N	N	150	0.37%	10
DUPONT NUTRITION BIOSCIENCES APS	Y	Y	139	0.35%	11
COLOPLAST A/S	Y	Y	132	0.33%	12
VESTAS WIND SYSTEMS A/S	N	N	130	0.32%	13
DANSKE BANK A/S	N	N	120	0.30%	14
LEO PHARMA A/S	N	Y	119	0.30%	15
HOUSE OF PRINCE A/S	N	N	118	0.29%	16
ROYAL UNIBREW A/S	N	N	117	0.29%	17
VKR HOLDING A/S	Y	Y	116	0.29%	18
ROCKWOOL A/S	Y	N	110	0.27%	19
CHEMINOVA A/S	N	N	107	0.27%	20
CHR. HANSEN A/S	Y	Y	101	0.25%	21
DK COMPANY VEJLE A/S	N	N	87	0.22%	22
T. HANSEN GRUPPEN A/S	N	N	81	0.20%	23
WIDEX A/S	Y	Y	81	0.20%	23
ECCO SKO A/S	Y	N	80	0.20%	25
Total (Top 25):	11	10	4,862	12.12%	



2. Rankings

2.3. Owners by Number of EUTMs, RCDs & IAs

DK - DENMARK

Top 25 Owners of the country by Number of RCDs Received

Owner Name	# RCDs	%	RK
PANDORA A/S	1,801	1.29 %	1
ECCO SKO A/S	1,651	1.19 %	2
ACTONA GROUP A/S	1,099	0.79 %	3
SCANCOM INTERNATIONAL A/S	936	0.67 %	4
ARLA FOODS AMBA	803	0.58 %	5
GRUNDFOS HOLDING A/S	637	0.46 %	6
MASCOT INTERNATIONAL A/S	559	0.40 %	7
PILGRIM A/S	504	0.36 %	8
HAY APS	465	0.33 %	9
VKR HOLDING A/S	462	0.33 %	10
EVA SOLO A/S	383	0.28 %	11
NORDLUX A/S	356	0.26 %	12
FURNIPART A/S	353	0.25 %	13
DANFOSS A/S	317	0.23 %	14
COLOPLAST A/S	316	0.23 %	15
LEGO A/S	295	0.21 %	16
GN AUDIO A/S	256	0.18 %	17
ØRGREEN OPTICS A/S	232	0.17 %	18
GRAN LIVING APS	231	0.17 %	19
INNOVATION LIVING A/S	217	0.16 %	20
MINKPAPIR A/S	204	0.15 %	21
BANG & OLUFSEN A/S	200	0.14 %	22
LINAK A/S	188	0.14 %	23
MAANESTEN A/S	180	0.13 %	24
MUUTO A/S	179	0.13 %	25
Total (Top 25):	12,824	9.22 %	



2. Rankings

2.3. Owners by Number of EUTMs, RCDs & IAs

DK - DENMARK

Top 25 Owners of the country by Number of IA Received

Owner Name	e-comm.	MyPage	# IAs	%	RK
OTICON A/S	N	N	35	2.73 %	1
AKTIESELSKABET AF 21. NOVEMBER 2001	N	N	20	1.56 %	2
CHR. HANSEN A/S	Y	Y	15	1.17 %	3
DK COMPANY VEJLE A/S	N	N	14	1.09 %	4
COLOPLAST A/S	Y	Y	13	1.01 %	5
DLF SEEDS A/S	N	N	11	0.86 %	6
VESTAS WIND SYSTEMS A/S	N	N	11	0.86 %	6
WIDEX A/S	Y	Y	11	0.86 %	6
AVK HOLDING A/S	N	N	10	0.78 %	9
3SHAPE A/S	N	N	9	0.70 %	10
VKR HOLDING A/S	Y	Y	9	0.70 %	10
CHEMINOVA A/S	N	N	8	0.62 %	12
KAMSTRUP A/S	Y	N	8	0.62 %	12
R82 A/S	N	N	8	0.62 %	12
DECHRA VETERINARY PRODUCTS A/S	N	N	7	0.55 %	15
FAIRPOINT OUTDOORS A/S	N	N	7	0.55 %	15
GRAVITY BOARD GAMES APS	N	N	7	0.55 %	15
JOE & THE JUICE A/S	N	N	7	0.55 %	15
NORDEX HOLDING A/S	N	N	7	0.55 %	15
NOVOZYMES A/S	Y	Y	7	0.55 %	15
BABCOCK & WILCOX A/S	N	N	6	0.47 %	21
DST-CHEMICALS A/S	N	N	6	0.47 %	21
DYKON A/S	N	N	6	0.47 %	21
FOUR DESIGN A/S	N	N	6	0.47 %	21
SAXO BANK A/S	N	N	6	0.47 %	21
TYTEX A/S	N	N	6	0.47 %	21
WORKZ A/S	N	N	6	0.47 %	21
Total (Top 25):	6	5	266	4.43 %	



2. Rankings

2.4. Representatives by Number of EUTMs, RCDs & IAs

DK - DENMARK

Top 25 Representatives by Number of EUTMs Received of owners of the country

Representative Name	Country of Repres	e-Comm	MyPage	#EUTMs	%	Rk
Without representative	XX	N	Y	6,778	16.90%	1
PATRADE A/S	DK	Y	Y	3,672	9.16%	2
ZACCO DENMARK A/S	DK	Y	Y	2,016	5.03%	3
OTELLO LAW FIRM	DK	Y	Y	1,919	4.78%	4
BECH-BRUUN LAW FIRM	DK	Y	Y	1,659	4.14%	5
PLESNER ADVOKATPARTNERSELSKAB	DK	Y	N	1,413	3.52%	6
CHAS. HUDE A/S	DK	Y	Y	1,194	2.98%	7
GORRISSON FEDERSPIEL ADVOKATPARTNERSELSKAB	DK	Y	Y	1,092	2.72%	8
AWA DENMARK A/S	DK	Y	Y	942	2.35%	9
BUDE SCHOU A/S	DK	Y	Y	929	2.32%	10
ABION IPR APS	DK	Y	N	686	1.71%	11
DLA PIPER DENMARK LAW FIRM P/S	DK	Y	N	673	1.68%	12
ACCURA ADVOKATPARTNERSELSKAB	DK	Y	Y	535	1.33%	13
LARSEN & BIRKEHOLM A/S	DK	Y	N	521	1.30%	14
DAHL LAW FIRM P/S	DK	Y	N	507	1.26%	15
PLOUGMANN VINGTOFT A/S	DK	Y	Y	488	1.22%	16
LØJE IP	DK	Y	N	462	1.15%	17
LØJE, ARNESEN & MEEDOM ADVOKATPARTNERSELSKAB	DK	Y	Y	455	1.13%	18
ELMANN IPR LAW FIRM	DK	Y	N	440	1.10%	19
ANDERSEN PARTNERS	DK	Y	Y	412	1.03%	20
BORGEN	DK	Y	Y	390	0.97%	21
NEMADVOKAT	DK	Y	Y	313	0.78%	22
ABION AB	SE	Y	Y	291	0.73%	23
KROMANN REUMERT	DK	Y	Y	291	0.73%	23
Total (Top 25):	3	23	17	28,078	70.01%	



2. Rankings

2.4. Representatives by Number of EUTMs, RCDs & IAs

DK - DENMARK

Top 25 Representatives by Number of RCDs Received of owners of the country

Representative Name	Country of Repres	# RCDs	%	RK
Without representative	XX	6,664	4.79 %	1
PATRADE A/S	DK	2,599	1.87 %	2
BECH-BRUUN LAW FIRM	DK	2,570	1.85 %	3
ESCHE SCHÜMANN COMMICHAU RECHTSANWÄLTE WIRTSCHAFTSPRÜFER STEUERBERATER PARTNERSCHAFTSGESELLSCHAFT MBB	DE	1,800	1.29 %	4
ZACCO DENMARK A/S	DK	1,780	1.28 %	5
AWA DENMARK A/S	DK	1,694	1.22 %	6
PLESNER ADVOKATPARTNERSELSKAB	DK	791	0.57 %	7
OTELLO LAW FIRM	DK	751	0.54 %	8
GORRISEN FEDERSPIEL ADVOKATPARTNERSELSKAB	DK	747	0.54 %	9
LØJE IP	DK	733	0.53 %	10
CHAS. HUDE A/S	DK	717	0.52 %	11
BUDDE SCHOU A/S	DK	697	0.50 %	12
RAHBEK-CLEMMENSEN	DK	690	0.50 %	13
LARSEN & BIRKEHOLM A/S	DK	501	0.36 %	14
PLOUGMANN VINGTOFT A/S	DK	438	0.31 %	15
GUARDIAN IP CONSULTING I/S	DK	394	0.28 %	16
STRYHN-JOHNSEN	DK	389	0.28 %	17
ACCURA ADVOKATPARTNERSELSKAB	DK	374	0.27 %	18
ANDERSEN PARTNERS	DK	369	0.27 %	19
KORTEGAARD	DK	368	0.26 %	20
AERA A/S	DK	341	0.25 %	21
JALILI-TRUDSLEV	DK	334	0.24 %	22
DAHL LAW FIRM P/S	DK	320	0.23 %	23
LØJE, ARNESEN & MEEDOM ADVOKATPARTNERSELSKAB	DK	293	0.21 %	24
ELMANN IPR LAW FIRM	DK	252	0.18 %	25
Total (Top 25):	3	26,606	19.12 %	



2. Rankings

2.4. Representatives by Number of EUTMs, RCDs & IAs

DK - DENMARK

Top 25 Representatives by Number of IAs Received of owners of the country

Representative Name	Country of Repres	e-Comm	MyPage	# IAs	%	Rk
PATRADE A/S	DK	Y	Y	204	15.90 %	1
BECH-BRUUN LAW FIRM	DK	Y	Y	93	7.25 %	2
CHAS. HUDE A/S	DK	Y	Y	75	5.85 %	3
ANDERSEN PARTNERS	DK	Y	Y	66	5.14 %	4
GORRISSEN FEDERSPIEL ADVOKATPARTNERSELSKAB	DK	Y	Y	62	4.83 %	5
ZACCO DENMARK A/S	DK	Y	Y	59	4.60 %	6
OTELLO LAW FIRM	DK	Y	Y	55	4.29 %	7
BUDDE SCHOU A/S	DK	Y	Y	46	3.59 %	8
LØJE, ARNESEN & MEEDOM ADVOKATPARTNERSELSKAB	DK	Y	Y	38	2.96 %	9
ACCURA ADVOKATPARTNERSELSKAB	DK	Y	Y	37	2.88 %	10
CHAS. HUDE A/S	DK	N	N	33	2.57 %	11
HØIBERG P/S	DK	Y	Y	25	1.95 %	12
PLESNER ADVOKATPARTNERSELSKAB	DK	Y	N	25	1.95 %	12
DEMANT A/S	DK	Y	N	23	1.79 %	14
LARSEN & BIRKEHOLM A/S	DK	Y	N	23	1.79 %	14
PLOUGMANN VINGTOFT A/S	DK	Y	Y	20	1.56 %	16
ZACCO DENMARK A/S	DK	N	N	20	1.56 %	16
DAHL LAW FIRM P/S	DK	Y	N	19	1.48 %	18
HOLME PATENT A/S	DK	Y	Y	19	1.48 %	18
JOHAN SCHLÜTER	DK	Y	Y	19	1.48 %	18
HAUGE	DK	Y	Y	18	1.40 %	21
BIRD & BIRD ADVOKATPARTNERSELSKAB	DK	Y	Y	16	1.25 %	22
HORTEN ADVOKATPARTNERSELSKAB	DK	Y	N	14	1.09 %	23
RAHBEK	DK	N	N	13	1.01 %	24
DLA PIPER DENMARK LAW FIRM P/S	DK	Y	N	11	0.86 %	25
REBERNIK	DK	Y	N	11	0.86 %	25
ABION IPR APS	DK	Y	N	10	0.78 %	27
NJORD LAW FIRM ADVOKATPARTNERSELSKAB	DK	Y	Y	10	0.78 %	27
OTELLO LAW FIRM	DK	N	N	1	0.08 %	29
Total (Top 25):	1	25	17	1,065	17.73 %	



2. Rankings

2.5. Country Representatives by Number of EUTMs, RCDs & IAs

DK - DENMARK

Top 25 Country Representatives for EUTMs

Representative Name	e-Comm	MyPage	#EUTMs	%	Rk
PATRADE A/S	Y	Y	4,612	10.51%	1
ZACCO DENMARK A/S	Y	Y	3,829	8.73%	2
PLESNER ADVOKATPARTNERSELSKAB	Y	N	2,277	5.19%	3
OTELLO LAW FIRM	Y	Y	2,207	5.03%	4
BECH-BRUUN LAW FIRM	Y	Y	1,968	4.48%	5
POTTER CLARKSON A/S	Y	N	1,760	4.01%	6
CHAS. HUDE A/S	Y	Y	1,522	3.47%	7
SONDER IP APS	Y	N	1,492	3.40%	8
GORRISSSEN FEDERSPIEL ADVOKATPARTNERSELSKAB	Y	Y	1,319	3.01%	9
AWA DENMARK A/S	Y	Y	1,316	3.00%	10
BUDDE SCHOU A/S	Y	Y	1,132	2.58%	11
NJORD LAW FIRM ADVOKATPARTNERSELSKAB	Y	Y	1,052	2.40%	12
ABION IPR APS	Y	N	1,047	2.39%	13
PLOUGMANN VINGTOFT A/S	Y	Y	993	2.26%	14
LØJE, ARNESEN & MEEDOM ADVOKATPARTNERSELSKAB	Y	Y	919	2.09%	15
DLA PIPER DENMARK LAW FIRM P/S	Y	N	805	1.83%	16
ACCURA ADVOKATPARTNERSELSKAB	Y	Y	771	1.76%	17
LØJE IP	Y	N	764	1.74%	18
AERA A/S	Y	N	733	1.67%	19
BEAR & WOLF ADVOKATANPARTSSELSKAB	Y	N	731	1.67%	20
LARSEN & BIRKEHOLM A/S	Y	N	627	1.43%	21
DAHL LAW FIRM P/S	Y	N	575	1.31%	22
ELMANN IPR LAW FIRM	Y	N	508	1.16%	23
BORGEN	Y	Y	487	1.11%	24
Total (Top 25):	24	13	33,446	76.21%	

Country of the representative: Denmark, the owner being from Denmark or other countries



2. Rankings

2.5. Country Representatives by Number of EUTMs, RCDs & IAs

DK - DENMARK

Top 25 Representatives of the country for RCDs

Representative Name	# RCDs	%	Rk
PATRADE A/S	2,925	2.34 %	1
BECH-BRUUN LAW FIRM	2,887	2.31 %	2
ZACCO DENMARK A/S	2,411	1.93 %	3
AWA DENMARK A/S	1,962	1.57 %	4
PLESNER ADVOKATPARTNERSELSKAB	1,071	0.86 %	5
PLOUGMANN VINGTOFT A/S	966	0.77 %	6
OTELLO LAW FIRM	923	0.74 %	7
CHAS. HUDE A/S	903	0.72 %	8
GORRISEN FEDERSPIEL ADVOKATPARTNERSELSKAB	902	0.72 %	9
LØJE IP	835	0.67 %	10
BUDDE SCHOU A/S	735	0.59 %	11
RAHBEK-CLEMMENSEN	690	0.55 %	12
POTTER CLARKSON A/S	604	0.48 %	13
LARSEN & BIRKEHOLM A/S	532	0.43 %	14
GUARDIAN IP CONSULTING I/S	433	0.35 %	15
AERA A/S	411	0.33 %	16
STRYHN-JOHNSEN	401	0.32 %	17
ACCURA ADVOKATPARTNERSELSKAB	395	0.32 %	18
ANDERSEN PARTNERS	369	0.30 %	19
KORTEGAARD	368	0.29 %	20
JALILI-TRUDSLEV	353	0.28 %	21
DAHL LAW FIRM P/S	321	0.26 %	22
LØJE, ARNESEN & MEEDOM ADVOKATPARTNERSELSKAB	317	0.25 %	23
DLA PIPER DENMARK LAW FIRM P/S	311	0.25 %	24
HOLME PATENT A/S	287	0.23 %	25
Total (Top 25):	22,312	17.86 %	

Country of the representative: Denmark, the owner being from Denmark or other countries



2. Rankings

2.5. Country Representatives by Number of EUTMs, RCDs & IAs

DK - DENMARK

Top 25 Representatives of the country for IAs

Representative Name	e-comm.	MyPage	# IAs	%	Rk
GEVERS	Y	Y	265	6.42 %	1
KOLSTER OY AB	Y	Y	237	5.75 %	2
PATRADE A/S	Y	Y	223	5.41 %	3
HEINONEN & CO	Y	Y	217	5.26 %	4
BERGGREN OY	Y	Y	194	4.70 %	5
ROSCHIER BRANDS, ATTORNEYS LTD.	Y	Y	163	3.95 %	6
FRKELLY	Y	Y	123	2.98 %	7
DENNEMEYER & ASSOCIATES	Y	Y	113	2.74 %	8
K.O.B. N.V.	Y	Y	106	2.57 %	9
BOCO IP OY AB	Y	Y	100	2.42 %	10
BECH-BRUUN LAW FIRM	Y	Y	97	2.35 %	11
OFFICE FREYLINGER S.A.	Y	Y	91	2.21 %	12
LAINÉ IP OY	Y	Y	89	2.16 %	13
REGGSTER OY	Y	N	86	2.08 %	14
CHAS. HUDE A/S	Y	Y	82	1.99 %	15
BORENIUS ATTORNEYS LTD	Y	Y	79	1.92 %	16
ANDERSEN PARTNERS	Y	Y	66	1.60 %	17
ZACCO DENMARK A/S	Y	Y	66	1.60 %	17
GORRISSSEN FEDERSPIEL ADVOKATPARTNERSELSKAB	Y	Y	65	1.58 %	19
AWA BENELUX SA	Y	Y	61	1.48 %	20
OTELLO LAW FIRM	Y	Y	58	1.41 %	21
PAPULA OY	Y	N	55	1.33 %	22
KIRKPATRICK, SA/NV	Y	Y	52	1.26 %	23
BUREAU M.F.J. BOCKSTAEL NV	Y	N	48	1.16 %	24
BUDDE SCHOU A/S	Y	Y	47	1.14 %	25
Total (Top 25):	25	22	2,783	61.08 %	

Country of the representative: Denmark, the owner being from Denmark or other countries